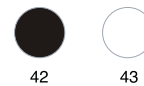


Color Options

SEAT : PC Glossy Finish (Transparent)

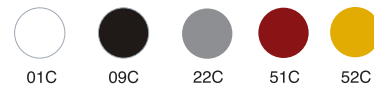


SEAT : PC Glossy Finish (Solid)



SEAT : PC Mat Finish

Coated Mat surfaces not recommended for contract usages



Frame Features

chrome plated Ø 17 mm - 2 mm thickness

(W Nickel plating-Decorative nickel plating-Chrome plated)

■ on request; the base could be produced with outdoor resistant special paint applications.
powder coated (mat):white,anthracite,black.

Net weight

(kg)
5.66

Gross weight

(kg)
6.65

Packaging

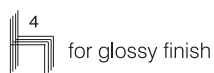


620x620x1060mm / m³ 0.40

Shipment Details

20' : 216 pcs.
40' : 456 pcs.
40HC : 456 pcs.
100cbm : 672 pcs.

Max.Stacking



for glossy finish



Stacking not
recommended
for mat finish

Description

Stackable stylish armchair exists in two types of expressive transparent and solid colour versions. Shell is made of polycarbonate with steel tube structure. Anti UV stabilized. OPAL armchair is also available in fully upholstered shell version. It enriches the chair and gives a distinct character for the interior usages.

Auxiliary Materials

4 pcs. gliders in polyurethane - 2 pcs. star supporting part - 1 pcs. star supporting drop label - 4 pcs (M6x28) montage bolt - 4 pcs. montage gasket - 4 pcs. montage anchor - 4 pcs.(M6) montage flake.

Cleaning & Maintenance

Should be cleaned with detergent and a soft damp cloth. Should not be cleaned with abrasive chemicals.
No periodic maintenance required.

Product Quality Certificate

